

For more information



Tel: **058 22076**



Email us at: waterford@locallink.ie
Facebook: www.facebook.com/locallink.ie
Twitter: [@waterfordLink](https://twitter.com/waterfordLink).



Operated By:
TFI Local Link Waterford
The Courthouse
Dungarvan
Co. Waterford
Eircode: **X35 NW65**



Ask your driver or other staff member for assistance



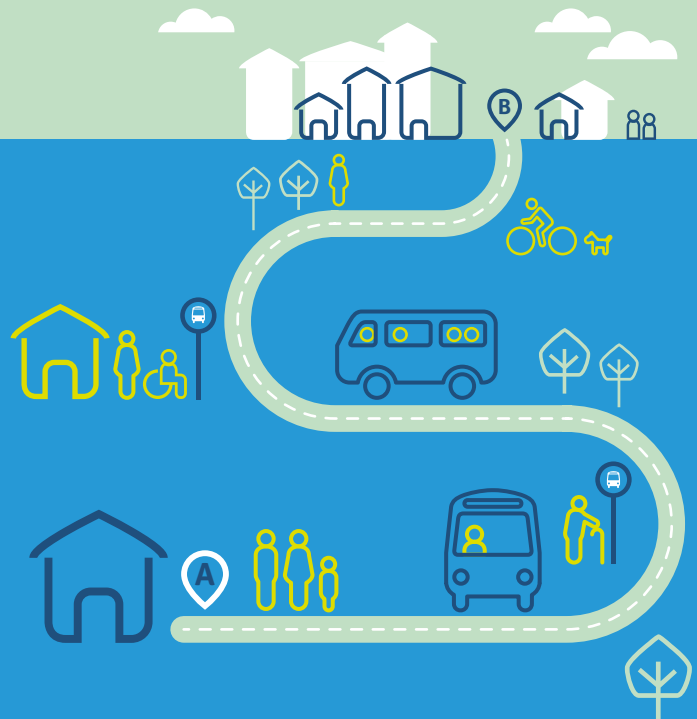
Our vehicles are wheelchair accessible



Fares:
Free Travel Pass holders, travel free.
All fares in this booklet are as follows:

Fare Type	Minimum	Maximum
Adult Single	€1.50	€3.00
Adult Return	€3.00	€6.00
Child Single (5-18)	€1.00	€1.50
Child Return (5-18)	€1.50	€3.00
Student Single	€1.00	€1.50
Student Return	€1.50	€3.00

Information correct at time of print: January 2022



Route 367A Dungarvan to Waterford City timetable



Timetable

367A

Dungarvan to Waterford City

Day: Monday to Saturday

DUNGARVAN TO WATERFORD CITY

Departs	Stops		
Dungarvan	<i>Davitts Quay</i>	7.30	13.30
Ballinroad	<i>Lord Maguires</i>	7.40	13.40
Stradbally	<i>The Square</i>	7.50	13.50
Bunmahon	<i>Playground</i>	8.05	14.05
Kill	<i>Dunphys</i>	8.10	14.10
Dunhill	<i>Community Centre</i>	8.20	14.20
Ballyduff Lower	<i>Church Car Park</i>	8.35	14.35
Kilmeaden	<i>Post Office</i>	8.40	14.40
Whitfield	<i>Hospital</i>	8.45	14.45
WIT	<i>Cork Road</i>	8.50	14.50
Manor Village	<i>Cork Road</i>	8.55	14.55
Waterford	<i>Parnell Street</i>	9.00	15.00
WUH	<i>Dunmore Road</i>	9.15	15.15

WATERFORD CITY TO DUNGARVAN

Departs	Stops		
WUH	<i>Dunmore Road</i>	10.00	17.00
Waterford	<i>Parnell Street</i>	10.15	17.15
Manor Village	<i>Cork Road</i>	10.20	17.20
WIT	<i>Cork Road</i>	10.25	17.25
Whitfield	<i>Hospital</i>	10.30	17.30
Kilmeaden	<i>Post Office</i>	10.35	17.35
Ballyduff Lower	<i>Church Car Park</i>	10.50	17.50
Dunhill	<i>Community Centre</i>	10.55	17.55
Kill	<i>Dunphys</i>	11.05	18.05
Bunmahon	<i>Playground</i>	11.10	18.10
Stradbally	<i>The Square</i>	11.25	18.25
Ballinroad	<i>Lord Maguires</i>	11.35	18.35
Dungarvan	<i>Davitts Quay</i>	11.45	18.45